

Lens Based Forms: Reviewing & Reflecting

"The Luminary"

Throughout the process of these artworks, I have refined my skills and developed as an artist. Though errors were present throughout the process of completing these artworks, reflection was done along the way. A success within the digital aspect of the mixed media pieces is present. As through trial and error my skills within Photoshop were refined. In relation to the process of the phone within both pieces, similar products were used. I feel that I was able to successfully transfer, simplify and refine the phone in relation to both pieces. In addition there was a consistent pattern of geometric figures within the first piece. This was inspired by the cubism aspect of Gris's work, though in contrast was portrayed digitally. This process was refined within Photoshop through practice of using figures. Errors also occurred throughout the process of creating the multimedia pieces. During the silk screening process error were made, as this was a my first time. The most present error is within the first piece, as initially planning was done incorrectly. The original idea for the piece contrasted from Owens overlapping of colors. The goal was for the yellow geometric figure to be silk screened and be transparent. This would allow for the phone text and light to co exist. Though through the process the silkscreen form left a solid figure rather than transparent. This cause the text to be faded away in comparison to the color placed upon. Though through this process I have learned for future silk screening to ensure a transparent color of plan for the background to be dominated. Overall through process and experimentation I was able to refine my skills and reflect on the artworks created.



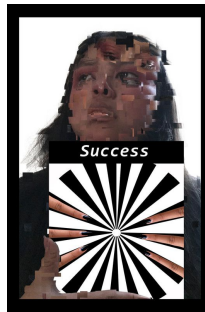
Saldana, Talia. *The Luminary*. 2018. Mixed Media.



"Scramble For Success"

My artwork does reflect some elements of my inspiration. As previously stated there is a comparison of similar style to Kruger's piece. Though there is a contrast in the medium used for the artwork due to time period. My art also focuses on the concept of success and its one idea forced upon young adults. It also express my personal unknown on my future through a scramble. This concept for my artwork has been reflected on along the way and condensed into my current artwork. A form of this is the use the optical illusion to allude to the concept of direction. There were success and failure throughout completing the artwork. Things that went well through the Photoshop process was cutting photos. As I had a basic knowledge of this it made the process smooth and clear. Though if I had more skill in Photoshop I would like to make the sign pop less out from it background. In the future if this project were to be done again, effort would have been placed on additions to the sign. An emphasis was still placed on the sign, though as initially desired. A challenge that arose initially was creating objects within Photoshop. This was time consuming due to the fact my knowledge did not exceed manipulating photography. Though throughout completing my artwork, I gained more of an understanding on proportions and how it affects elements within Photoshop.

In reflection to the process used above, adjustments could be made. More tools could have been used to experiment with in Photoshop. If done well this could have added more elements to the final piece itself. Though much time was exhausted in attempts to create elements within Photoshop. This includes the trial and error process in the developing on the optical illusion. This is also a critique on how the initial plans for the circle where set. As at first it was going to madeline by line within Photoshop. Though experimentation and research allowed for the circle to be more precise. In the future initial plans should be set for a balanced central element for the artwork. In this case using correct measurements and experimenting more, prior to starting the artwork.



Saldana, Talia. *Scramble for Success*. 2018. Digital Manipulation.

3D Forms: Experimentation, Planning & Techniques

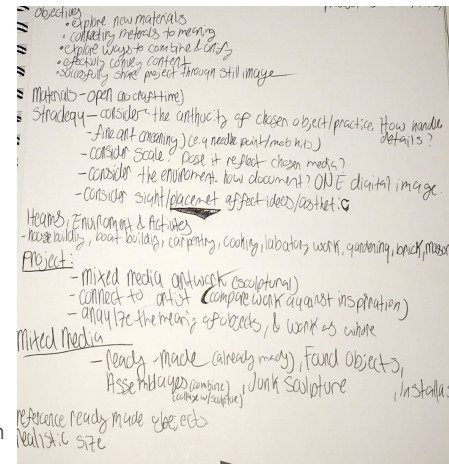
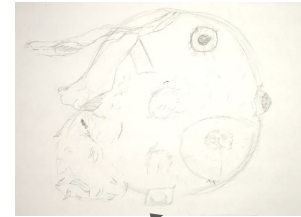
Experimentation: Experimentation was done through out the mixed media pieces construction. Initially when deciding what to use and wrap around the doll the wire shown above was considered. This was due to its stiff shape being able to hold. Though when attempting to set the wire at a certain width it was difficult to make it stay and not ruin the interior of the work previously done. It also blocked what was done, due to the wire being thick. Overall it was experimented to hold at the bottom of the work. Through the wire expanded into unwanted locations, such as the torso. Through this experimentation I learned that the rope was the best fit due to its elements of overlapping and depth.

There was also examination done when taking photos of the final piece. This included different poses and lighting of the same background and mixed media piece. Above an example of one photos taken can be seen. Through this examination I gained a better understanding for lighting in relation to the art and background used. The particular issue with this photo is the tone of color. As the photo is a shade of orange rather than white. The bends within the background are also faulty visible. This is an issue as it hinders the artwork.



This final **sketch** focuses on a doll figure which is inspired by both inspirations. As Kokin and Youdelman both used types of dolls within their artwork. The sketch includes found objects, which included objects as screws and hinges. This is again similar to the inspiration of Kokin as she used smaller playful objects

There is displacement within this **sketch**, as the stuffed animal is to be placed within a different base. There is an aspect of childhood through the found object to be used within. This is due to the stuffed animals being reminiscent of childhood. This sketch is similar to that of the inspiration of Youdelman piece Roller Empress. Both pieces use found object that are reminiscent of childhood. The sketched piece would involve sewing ins order to produce the wanted combination of stuffed animals. This is similar to Kokin's use of sewing, though is a different context.



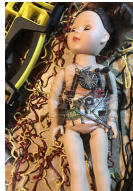
Planning: Before conducting the process of creating the artwork, I had general premises set for the mixed media sculpture. As there was a focus on meaning within objects in relation to the piece to be created. There is also concepts for the placement of the complete piece to be put. As the photo taken is also part of the art work. This includes shadows, placement and the location/background.

Preferred Techniques: When making the art piece techniques were used in order to further improve the security of the objects. At time there were holes within objects. This would allow for one to push a thread through that hole and secure it. This was especially helpful for areas such as the rounded leg. Though on large parts such as he torso. The opposite occurred. This was due to it moving around to frequently and away from its original location.

Another technique used was tying the thread onto the object itself. This was particular used for the hinges. As those are large and heavy objects. Due to their mass more need to be done in order to secure them onto the doll base. Multiple ties were also done in a neat fashion in order to end a thread. I wanted for the thread not to bunch up, but so also wanted there not be strangled ends. These techniques with the nylon allowed for me to more effectively complete the mixed media piece.

3D Forms: Process

The artwork created was dependent upon the base form of the doll. The doll is to be used as center base for the found objects to be placed. The tags of the doll are cover up. This is done through reinforcement in order to maintain the original shape and form of the doll. Next the found objects to be use on the figure are sorted through for relevancy in relation to the artwork made. Some of the assortment of piece left can be seen within the second image above. This includes items such as nails and screws. Once chosen, thread is begun being used. The particular type of thread is 100% nylon thread that is strong. This allows for better security when adding object to the base. As the thread is to be used in order to fix the items onto the doll. The particular thread used is not thick and can be seen wrapping around within the third image. The doll may be wrapped around the torso multiple times in order to secure the items placed. This process is then continually done to a careful yet securing extent. This is due to heavy objects being easy to move to comparison to the thread used. This is why for some objects, securing the item is more important. This step is then repeated multiple times in order to achieve the wanted amount of objects. As there is an overlapping present within the inspiration of the piece. The found objects are added multiple times and in layers in order to add depth. Layers are also present when the rope is added as a layer to the mixed media sculpture made. The rope used can be seen within sixth image. This colorful rope served as an add initial base that overlapped itself approximately three times. This was done in order to fill the gaps still left within the piece. Next the hinges were added to the piece. How they were secured can be seen above. Again thread is used in order to tie and place the objects onto the figure. This is similar to the initial process used at the begging of the piece. Though now the object is intertwined between the rope in order to be secure and set within the piece. This is primarily focused on the overlapping rope and the addition of hinges to the exterior of the piece.



Youdelman, Nancy. Roller Empress. 2014. Mixed media sculpture.



Kokin, Lisa. Orientation. 1995. Mixed Media Sculpture.

3D Forms

Communication of ideas & intentions/ Critical investigations/ Compare and Contrast

Youdelman served as a source of inspiration for the mixed media piece made. "Roller Empress" is a mixed media sculpture that was created in 2014. The sculpture was made fairly recently. The mixed media sculpture consists of thread, rollers and encaustic. The piece is also reflective of the artist as Youdelman is a know feminist. She was also apart of the first feminist art class. Youdelman conveys here feminist viewpoint within her art and studies. Within the particular sculpture of inspiration these feminist concepts can be perceived. This is through the use a female doll enveloped within the rollers. As hair rollers are used for hair, in which they are seen as feminine. The objects used by Youdelman for her mixed media sculpture is reflective of her values and is embodies feminism.

Compare & Contrast: Youdelman mixed media sculpture served as a source of inspiration. Similar concepts are between the two pieces, as the inspiration affected my artwork. As Youdelman uses a female doll as the base of her piece. There is also a use string in order to contain or envelope the doll within. The same large objects are also consistent throughout the entirety of the piece. In concept bothe pieces hold a feminist message through the mixed media created. Though there were differences present from the inspiration. As Youdelman focuses on feminine products, which are primarily the hair rollers. These are the only object that is constantly around the figure.

Kokin served as another source of inspiration for the mixed media piece made. "Orientation" is a mixed media sculpture which is apart of Kokin's sculpture one. This consist of stitching and sewing object such as toys. Kokin describes having a fascination with "...sewing what is not normally sewn". Kokin is reflective on here family history as this particular artwork embodies the craft of her family, which is sewing. This can be seen throughout her artworks as they focus on history and are reflective of her values. This also includes found objects within her artwork. In relation the piece of inspiration uses found objects and combines them together in order to add meaning to the mixed media sculpture made. The particular piece uses small objects over the body frame of the figure. This is done with the body visible which overlaps with the objects placed on top. This includes objects such as screws, beads, googly eye, ect. Kokins piece focussed of the figure in relation to the objects and is reminiscent of the past.

Compare & Contrast: Kokin's mixed media sculpture served as another source of inspiration for my piece. Elements of Kokin's piece inspired by artwork, which can be seen through the similarities present. As both artworks focus on the doll as a center. The doll also serves as a base for found objects to be placed upon. There is also the used of found objects for both pieces. As I also use these objects though on a larger scale than than of Kokin. This difference is also present when it comes to the quantity ratio to size of the objects used within the piece.

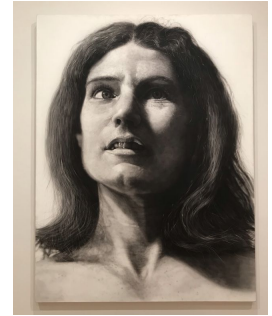
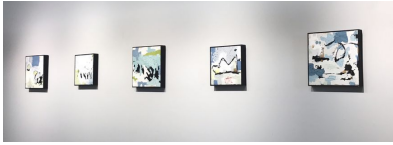
Gallery visits

MIAD

November, 2018

Milwaukee Art Museum

May, 2018



When visiting the college of MIAD, I also viewed the gallery that the institute had. There was student charcoal landscapes. Some for the works were subtractive, while other were not. It was intriguing to see how the played with depth and light despite only having charcoal. There were also small scaled paintings. The paintings held a more vibrant color and presence. The paints were also more abstract than the charcoal drawings. Though despite how abstract the figures were, the paintings still held aspects of detail. Seeing this gallery made me analyze form and depth within works.

I visited the Milwaukee Art Museum, initial to view Chuck Close's work up close for my piece "Destruct". As Closes work is filled with deatil and is refined. I was also intrigued to see how he present depth and shadows, through monochrome shades. As the lack of color can limit the work, though Closes uses it to empower his piece.

Though while at the museum I also viewed other works. The other works were abstract, light and colorful. These were a contract to the monochrome shades of Close. Seeing these opposing parties also allowed me to view the benefits of both, and how they are presented.

UWSP: Alphabet December 7, 2018

As a class, we took a field trip to UW Stevens Point for a workshop. The premise was to find letter of the alphabet within your natural surroundings. You were also able to construct your letter with nearby objects. The letter I was given was E, and the images bellow showcase what I "found". From this workshop, I gathered the ability to analyze nearby object from a 3d standpoint. I also practiced manipulating objects, in order to achieve my goal. As I took pictures of my letters formed, I also touched upon a lens format. This can especially be seen within the second e, as I play with the thumbtacks shadow. Despite the main product being within a 3-D format, photography still plays a role in a display of the final piece.

Workshops

MIAD: Figure Drawing February 14, 2020

My class also took a field trip to Milwaukee's Institute of Art and Design for a workshop. During this workshop we drew clothed figures, with various poses with charcoal. The figure I had to draw was a middle aged male. To start we draw quick sketches for 30 seconds to one minute. This was done in order to practice quick and base form. We continued to lengthen the time for which we observed and sketched the forms. This workshop allowed me to observe my surroundings and apply them within a 2-D format. I was also able to mess with shadow and light, while using charcoal. The form of charcoal we used was wider, and not made for detail. This allowed for me to focus on the figure rather than detail. Below are photos of the workshop and my work.

